

ECOTOXICOLOGY OF EARLY-LIFE STAGES IN THE COMMON CUTTLEFISH *SEPIA OFFICINALIS*: REVIEW AND PERSPECTIVES

T. LACOUÉ-LABARTHE^{1,*}, C. LE PABIC², P. BUSTAMANTE¹

¹ Littoral Environnement et Sociétés (LIENSs), UMR 7266 CNRS - Université de La Rochelle, 2 rue Olympe de Gouges, 17000 La Rochelle, France

² Unité Biologie des Organismes et Écosystèmes Aquatiques (BOREA, UMR 7208), Sorbonne Universités, Muséum National d'Histoire Naturelle, Université Pierre et Marie Curie, Université de Caen Normandie, CNRS, IRD; CP51 57 rue Cuvier 75005 Paris, France

* Corresponding author: tlacouel@univ-lr.fr

EGG DEVELOPMENT
EGGSHELL
JUVENILE
BIOACCUMULATION PATHWAYS
TOXIC EFFECTS

ABSTRACT. – Cephalopods, and among them, the cuttlefish *Sepia officinalis*, are well-known to highly accumulate both organic and inorganic contaminants in their tissues. According to their ecology, embryonic and juvenile development occurs in coastal waters and is thus particularly subjected to anthropogenic contaminants. Considering that these early life stages are relatively long compared to the total life span of cuttlefish (i.e. 2 months of embryogenesis and 1 month of maturing juvenile life vs. 12 to 18 months of life span), the exposure of eggs and juveniles to contaminants may affect the ontogenesis and development of these earliest stages and impact the recruitment success. This study reviews the sparse knowledge on the effects of contaminants on embryonic development and juvenile life. The embryos which are surrounded by an eggshell are partly protected against dissolved metal accumulation, but may be subjected to maternally transferred contaminants. Moreover, this bioaccumulation capacity could be affected by the physiological responses of embryos to the environmental variations such as seawater warming or hypercarbia. When hatched, juveniles can accumulate contaminants from waterborne, sediment and dietary pathways. Food appears to be the main source of contamination for most metallic contaminants. The digestive gland is known to be the main organ of detoxification and storage in adult cephalopods but in embryos and juveniles, the immaturity of the digestive system raises the question of its efficiency to cope with the toxic effects of contaminants during these early life stages. To date, a couple of studies have highlighted the sublethal effects of metals, e.g. Ag, Cd, Zn, and pharmaceuticals, e.g. fluoxetine, on digestive, immune and neural systems, with consequences on growth and behavior.

INTRODUCTION

Among coastal cephalopods, the common cuttlefish *Sepia officinalis* completes its life cycle both offshore and nearshore. More precisely, following an offshore migration from their overwintering areas, adult cuttlefish colonize the coastal waters in spring to mate and spawn (e.g. Boucaud-Camou & Boismery 1991). Clusters of hundreds of eggs are laid on fixed natural substrata such as algae, tubes of polychaetes (Blanc & Daguzan 1998), or artificial structures, typically on fishing traps or nets. The embryo develops in an egg for one to two months depending on the seawater temperature (Mangold-Wirz 1963, Richard 1971). This constitutes a relatively long period when compared to the short life-span of this species that ranges from 12 to 18 months (Boucaud-Camou *et al.* 1991, Gauvrit *et al.* 1997, Le Goff *et al.* 1998, Guerra 2006). Upon hatching, the young cuttlefish emerge biologically, morphologically and behaviorally similar to the adults (Boletzky 1986). Then, the ensuing juveniles grow in the highly productive coastal waters guaranteeing appropriate food, resulting in rapid growth (Blanc & Daguzan 2000) and fostering subsequent recruitment. Juveniles benefit from littoral areas before their offshore

migration in fall to overwintering grounds. Avoiding seawater temperature colder than 10 °C, juveniles start their sexual maturation which is completed only one (or two) year(s) later after a return migration back inshore towards productive shallow waters (Boucaud-Camou & Boismery 1991).

For its critical life stages (the embryonic and juvenile life), *S. officinalis* depends heavily on these littoral nurseries where, paradoxically, the environmental conditions are highly variable and can thus be stressful. Among the pressures occurring in coastal zones, the contamination by anthropogenic chemicals released from various sources remains a major concern considering the legacy of past massive release of contaminants and the emergence of new compounds, the potential impacts of which are not yet known (Richardson *et al.* 2005). Hence, persistent organic pollutants (POPs), oils, heavy metals, radionuclides, litters and debris including plastics, and pharmaceuticals are susceptible to being found in most coastal areas worldwide, and could result in deleterious effects, directly or indirectly on living resources (e.g. Williams 1996), including the early-life stages of cuttlefish.

The determination of contaminant burdens in cephalopod tissues within an ecotoxicology and human health

risk assessment perspective started four decades ago, especially with the survey of radionuclide and metal concentrations in edible parts of octopus and squid (Suzuki *et al.* 1978, Nakahara *et al.* 1979, Ueda *et al.* 1979, Miramand & Guary 1980, 1981). Since then, most research has focused on the analyses of trace elements, and to a lesser extent on that of organic compounds (Tanabe *et al.* 1984, Kawano *et al.* 1986, Son *et al.* 2015) in organisms sampled in the field. The values recorded in cephalopod tissues rapidly revealed the exceptional capacities of these organisms to bioaccumulate and concentrate contaminants, whatever their geographical origin was, either contaminated or pristine areas (Yamada *et al.* 1997, Bustamante *et al.* 1998a, 1998b, Dorneles *et al.* 2007, Kojadinovic *et al.* 2011). Contaminant levels in cephalopods also displayed large variations according to the age, sex and maturation state of the individuals, and obviously among species and life-history traits (Ueno *et al.* 2003, Miramand *et al.* 2006, Won *et al.* 2010, Chouvelon *et al.* 2011). Nevertheless, contaminants concentrate in specific organs among which the digestive gland and the branchial hearts and their branchial heart appendages generally show the highest levels. Thus, the digestive gland appears to be playing a key role for detoxification/storage of Ag, Cd, Cu, ^{210}Po , Zn (Martin & Flegal 1975, Smith *et al.* 1984, Finger & Smith 1987, Miramand & Bentley 1992, Bustamante *et al.* 1998a, 2002a), organochlorine compounds (Yamada *et al.* 1997, Ueno *et al.* 2003, Storelli *et al.* 2006, Won *et al.* 2009), and PAHs (Morais *et al.* 2013, Semedo *et al.* 2014) whereas the branchial hearts and their associated accessory appendages are involved in the retention and/or excretion of ^{241}Am , ^{137}Cs , Co, Fe, V and of ^{237}Pu (Suzuki *et al.* 1978, Ueda *et al.* 1979, Miramand & Guary 1980, 1981, Bustamante *et al.* 2004, 2006c). In this respect, mercury (Hg) and arsenic (As) appear to behave differently from the other elements as muscular parts (arms and mantle) contain the largest fraction of the whole body burden (e.g. Seixas *et al.* 2005, Bustamante *et al.* 2006b, 2008). Such a specific distribution might be linked to the affinity of methyl-Hg for sulphhydryl groups of muscular proteins.

The cuttlefish *S. officinalis* efficiently accumulates metals and PCBs despite their short life span (Miramand & Bentley 1992, Bustamante *et al.* 2002a, 2006a, 2006b, Chouvelon *et al.* 2011, Rjeibi *et al.* 2014). The rapid growth and the carnivorous food regime designated the trophic route as the main bioaccumulation pathway for most investigated contaminants. Thus, some experimental studies were designed to investigate the metabolism of trace elements and organic contaminants and to determine the contribution among sources of contamination (dissolved contaminants *vs* food contained contaminants (Bustamante *et al.* 2002b, 2004, 2006c, Danis *et al.* 2005). Bioaccumulation models applied to delineate the uptake and elimination rates confirmed that food is the main bioaccumulation source for Cd, Co, and Zn,

whereas seawater appears to be the main route for Ag, Cs or PCBs incorporation. Moreover, it is noteworthy that a poor accumulation in the tissues directly in contact with seawater occurs as both metals and PCBs are transferred to the digestive gland or to the branchial hearts following waterborne exposure, underlining the key role of these organs for detoxification and storage (Bustamante *et al.* 2002b, 2004, 2006c, Danis *et al.* 2005). The concentrations of both these contaminants vary as a function of specimen size, reflecting the ambient contamination of seawater (Ueno *et al.* 2003, Miramand *et al.* 2006) and/or a change of their diet (Chouvelon *et al.* 2011). Finally, PAHs are poorly metabolized by cephalopods in general, and accumulated molecules also showed an organotropism toward the digestive gland, the most lipidic organ in cephalopods (see review of Morais *et al.* 2013).

Fine-scale investigations on the detoxification process have only been performed with respect to trace elements and the results of these studies remain somewhat controversial. The subcellular distribution of trace metals in the digestive gland allow those mainly associated to the hydrosoluble fraction (cytosol), *i.e.* Cd, Co and Cu to be distinguished from those mainly associated with the organelles, *i.e.* Ag, Fe, Mn, Pb, and Zn (Bustamante *et al.* 2006a). Although soluble metalloproteins such as the metallothioneins (MTs) are usually suspected to play a key role in the binding of both essential and non-essential metals (namely Cu and Zn, and Ag, Cd and Hg, respectively), under a non-metabolically available form in cephalopods (Tanaka *et al.* 1983, Finger & Smith 1987, Castillo & Maita 1991). Cd found in the cytosol is associated with higher molecular weight proteins (> 70 kDa) than MTs (~3 kDa). Similarly, cytosolic Cu in the digestive gland is suspected to be mainly associated with haemocyanin and MTs contrasting with its reported storage in metal-rich “spherules” previously described by Martoja and Marcaillou (1993). Contrasting to this, the lysosomal fraction appears to play a key role in Ag binding and detoxification (Bustamante *et al.* 2006a). A reported change of Cd association with organelles (expected to be lysosomes) when total body Cd concentrations increase, implied simultaneously the limited role of MTs in Cd detoxification processes (Bustamante *et al.* 2002a). In *S. officinalis*, the lysosomal system is highly developed and consists in specific structures called “boules” which are considered as heterolysosomes and heterophagosomes resulting from the intracellular digestion, evolving into residuals bodies and brown bodies (Boucaud-Camou & Yim 1980). The presence of the boules should contribute to the high capacity of Sepiids to bioaccumulate trace elements at very elevated concentrations when compared to other families such as the loliginid squids in which the lysosomal system is less developed and lacks the “boules” structures.

A survey of contaminant distribution and concentrations in the tissues of *S. officinalis* at different ontogenic

stages has highlighted a continuous accumulation of metals (except Ag) throughout its life cycle (Miramand *et al.* 2006). Thus, *S. officinalis* is regularly designated as a hyperaccumulator organism due to both its efficient accumulation and low elimination rates of contaminants, which is considered as a strategy to favour the use of energy for growth rather than for detoxification and elimination of toxic elements in this short life-span species. This characteristic also implies an apparent tolerance to the potential toxic effects of contaminants.

The physiological and ecological effects of both organic and metallic contaminants on cephalopods remain largely unknown. To the best of our knowledge, only four studies (excluding those on early-life stages) directly investigated the physiological impacts of trace metals in octopus and cuttlefish. Thus, DNA damage was related to Cd concentrations measured in *Octopus vulgaris* from the Portuguese coast (Raimundo *et al.* 2010). In the same species, the production of reactive oxygen species (ROS) was correlated to a set of metal concentrations measured in octopus tissues (Semedo *et al.* 2014), but the lack of damage to lipids or proteins suggested an apparent tolerance of cephalopods to ROS production associated to the high metal concentrations. More recently, it has been shown that the immune system, *i.e.* lysozyme activity of octopus is stimulated following injection of TiO₂ nanoparticles (Grimaldi *et al.* 2013). In the cuttlefish *S. officinalis*, only the study of Le Bihan *et al.* (2004) demonstrated a perturbation of digestive enzyme activities when Ag, Cu and Zn are added to a digestive gland cell suspension *in vitro* whereas exposure to Cu on live animals had a beneficial effect on digestive enzymes (Lacoue-Labarthe *et al.* 2010a).

This short summary on the effects of contaminants on cephalopods underlines the lack of knowledge on the potential impact of contamination on coastal cephalopods and specifically on *S. officinalis* populations. Due to the short life cycle and its rapid growth, the cuttlefish is considered to be sensitive to environmental variations (Pierce *et al.* 2008), leading to yearly fluctuation of its stocks (Royer *et al.* 2006). However, the consequences of the degradation of the coastal water quality, and especially the reproduction areas and nurseries that shelter the most sensitive ontogenic stages are largely unknown.

In this context, the aim of this review was to address several issues related to the ecotoxicology of cuttlefish early-life stages: 1) the bioaccumulation pathways in embryos and juveniles that differ from those in adults, 2) the fact that embryos develop within a complex structure, the egg, and 3) the fact that embryos and juveniles are morphologically and physiologically developing individuals, with potentially limited detoxification capacities and a higher sensitivity to the toxic action of contaminants. These points are hereafter developed.

THE EMBRYONIC STAGE: A DEVELOPING CUTTLEFISH ENCAPSULATED IN A COMPLEX EGGSHELL

Like many cephalopods, cuttlefish lay eggs encapsulated by three envelopes (Boletzky 1986): the telolecithic oocyte is first surrounded by a membrane (*i.e.* the chorion) derived from the follicular cells in the ovary; at spawning time, the oocyte is then embedded by mucosubstances produced by the oviducal gland; finally, once released in the mantle cavity, the oocyte is enwrapped by several layers of nidamental gland secretions stained with ink (Jecklin 1934; see Figs 1 and 2). These different layers delimit a micro-environment in which the embryo develops, *i.e.* the perivitelline fluid (PVF), and which protects it against the surrounding environment, *e.g.* from microbial infection and predation (Boletzky 1986). During development, the eggshell first hardens and becomes thicker because of the polymerization of its components (Gomi *et al.* 1986). This reaction leads to 1) a loss of the water contained in the mucopolysaccharidic components and 2) a decrease

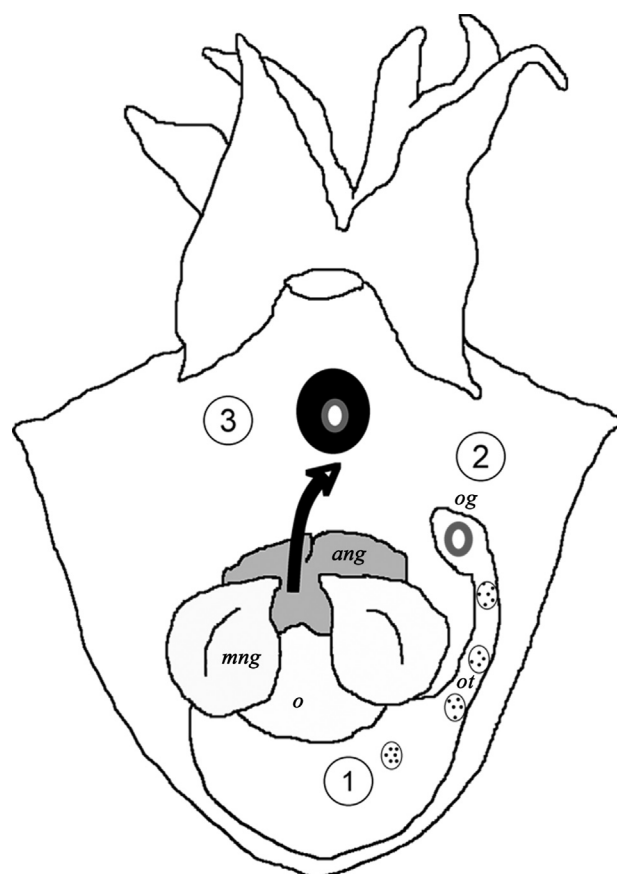


Fig. 1. – Successive steps of ovulation and encapsulation of the eggs in the female mantle cavity. 1: full grown oocyte surrounded by the chorion; 2: oocyte with the oviducal envelope; 3: embedded oocyte with the nidamental mucosubstances and ink. ang, accessory nidamental glands; o, ovary; og, oviducal gland; ot, oviducal tract; mng, main nidamental gland (modified from Zatylny *et al.* 2002; published in Lacoue-Labarthe *et al.* 2009c).

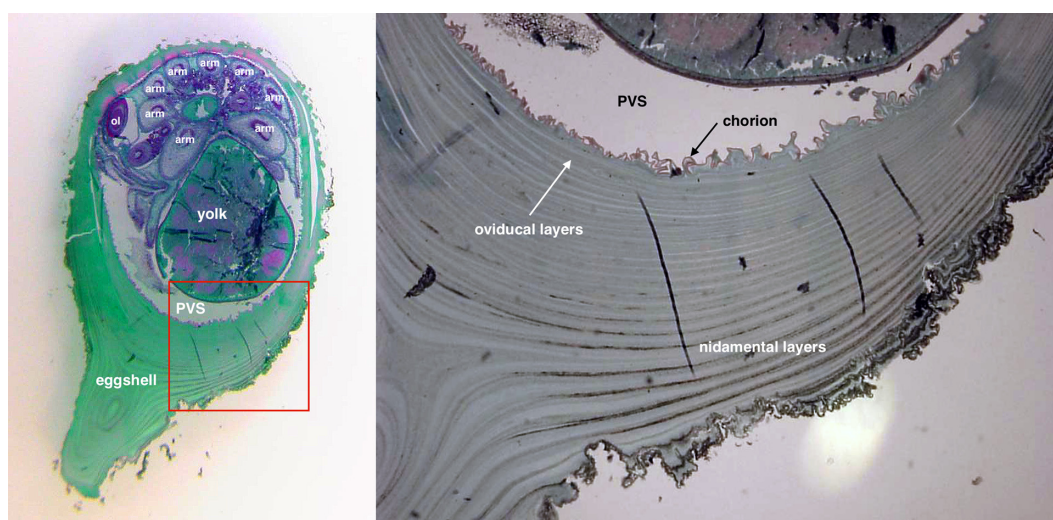


Fig. 2. – Histological section of a whole cuttlefish egg (left) at the end of the development: arm: arms of the embryo; ol: optical lobe; PVS: perivitelline space. Details of the eggshell structure (right) composed of a chorion, and several layers of oviducal and nidamental secretions.

in egg weight (Boletzky 2003). During the first two-thirds of embryonic development the egg grows slowly. From this time onward, the weight of the egg increases rapidly due to the entry of water, which is incorporated into the PVF in order to allow sufficient space for the embryo to grow. Along with these morphological changes, the eggshell becomes thinner, being almost transparent at the moment of hatching (Wolf *et al.* 1985, Gomi *et al.* 1986). It is noteworthy that these structural changes of the egg and the eggshell occur concomitantly to major embryonic developmental phases: the blastulation starts while the eggshell hardens, and then critical phases such as gastrulation and organogenesis occur during the first two-thirds of the development time in an apparently impermeable egg (Boletzky 2003). The last phase of development consists of a period of growth and organ development that is accompanied with the egg swelling leading to an increase of the perivitelline volume, which is required for embryonic development.

The cuttlefish capsule: an effective shield against waterborne contaminants

As previously stated, embryonic development takes a relatively long time when compared to the whole life span, approximately 2 months at a temperature of 16 °C. During this time, the egg is in contact with dissolved contaminants contained in the water column and thus the embryo is susceptible to exposure to them if they are able to cross the eggshell. Once in the egg, the question of the capacity of the embryo to accumulate contaminants is raised as they could produce toxic damages during ontogenesis. Concerning metallic elements, *in situ* measurements of metal concentrations in late embryos and hatchlings highlighted a drastic increase of essential Cu, Fe and Zn suggesting that the eggshell limits the uptake

of essential elements despite a growing need to fulfil the metabolic demands of the animal (Miramand *et al.* 2006). Interestingly, the same study revealed a similar increase regarding the non-essential Ag but a constant concentration of Cd when comparing both development stages (Miramand *et al.* 2006). These findings suggest that the eggshell embedding the embryo hinders the penetration of most metallic ions within the egg, but that this property is metal selective.

A set of experimental studies using radiotracers as a tool to delineate the bioaccumulation processes in cuttlefish eggs confirmed the protective role of the eggshell toward dissolved metals but highlighted variations in these properties. Thus, an 11-d exposure of late stage (stage 27-28 according to Lemaire 1970) eggs to dissolved ^{110m}Ag , ^{241}Am , ^{109}Cd , ^{57}Co , ^{134}Cs , and ^{65}Zn showed that the main fraction of radioelements (but ^{134}Cs and ^{110m}Ag to a lesser extent) was found associated to the eggshell (> 80 %), suggesting that nidamental layers retained these metals and limited their incorporation in the internal egg compartments (*i.e.* the PVF, the vitellus and the embryo) (Bustamante *et al.* 2002b, 2004, 2006d). In contrast, the eggshell appeared more permeable to Ag and ^{134}Cs that were accumulated in the tissues of the embryo. The exposure to 9 waterborne metals and radionuclides of the eggs over the entire duration of embryogenesis was carried out to investigate a potential variation of the eggshell shielding properties according to the development course (Lacoue-Labarthe *et al.* 2008a, 2009c, 2010b). Thus, whole eggs displayed a high capacity for trace element accumulation despite variations among elements. The obtained concentration factors (CFs) ranged as $\text{Ag} \gg ^{241}\text{Am} > \text{Pb} > \text{Co} \gg \text{Zn} \gg \text{Hg} > \text{Cd} > \text{Mn} \gg ^{134}\text{Cs}$. Also, the distribution of trace elements among egg compartments highlighted the key role of the eggshell to hinder the penetration of trace elements into the egg. Indeed,

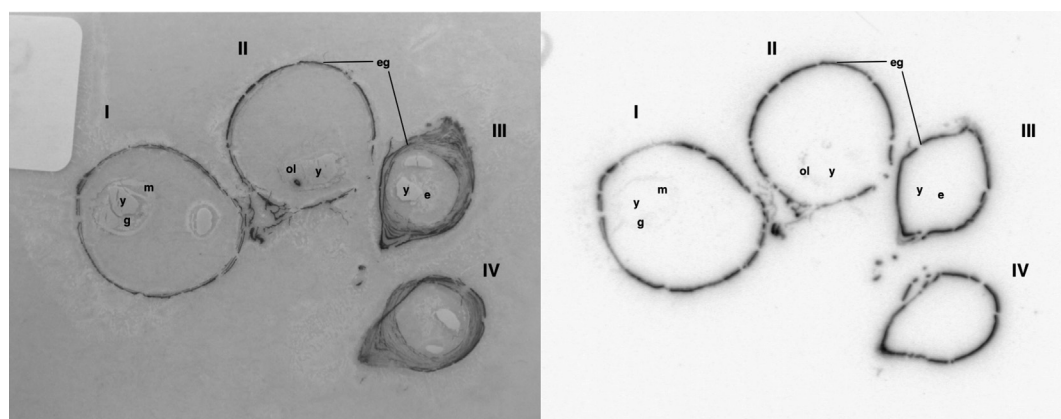


Fig. 3. – Section (left) and autoradiogram (right) of whole eggs of *Sepia officinalis* at the end (I and II) or mid-term (III and IV) of development, after exposure to dissolved ¹⁰⁹Cd for one week: e: embryo, eg: eggshell, g: gills, m: muscle, y: yolk. Note that the ¹⁰⁹Cd is mainly found on eggshell whatever the development stages. ¹⁰⁹Cd is also slightly revealed on external tissue of embryo found in developed eggs I and II, whereas no trace of element is detectable inside “younger” eggs (eggs III and IV).

radiotracers were exclusively detected on the eggshell during the first two thirds of development, suggesting that they were adsorbed onto the surface or trapped deeper on the eggshell compounds (see Fig. 3). This mechanism is understood as an efficient system totally protecting the embryo and its vitelline reserve during the critical organogenesis phase. This shielding property has also been recently reported for Co, Mn, Ni, Pb, and V, which were detected at high concentrations in the glycoproteic capsule of cuttlefish eggs from the wild (Rosa *et al.* 2015). The eggshell power of retention of trace elements could be partially explained by the chemical composition that foster binding to metallic ions. In cephalopods, the nidamental secretions contain a high proportion of glycine, threonine, proline and isoleucine (Kimura *et al.* 2004). It is thus likely that transition elements could bind to and be retained on these carboxyl-rich groups of the eggshell mucopolysaccharides (Miramand *et al.* 1989, Passow 2002). Belonging to class B elements, Ag, Hg or Zn are also well-known for their affinity for the sulfhydryl groups (e.g. Wedemeyer 1968, Temara *et al.* 1997) and might bind to those that occur in the mucine-rich egg surface layers (Boletzky 1998, Kimura *et al.* 2004). Nevertheless, this retention is not permanent throughout development; the radiotracers can be released in seawater when the eggs are placed in depuration conditions. Interestingly, eggshell Ag and Cd concentrations also decreased after the first half of the development time (see Lacoue-Labarthe *et al.* 2008a, 2009b), while the egg is still exposed to waterborne metals, suggesting a determinant change of eggshell structure at this time. On the other hand this lowered bioaccumulation effectiveness means that some trace elements initially bound to egg capsule are translocated to embryonic tissues, demonstrating that eggshell has to be considered both as a shielding barrier but also as a source of contaminants when becoming permeable during the last part of embryonic development (Lacoue-Labarthe *et al.* 2008a).

As soon as the growing phase started (*i.e.* in the final third of the development time), trace elements begin to be detectable in PVF and embryonic tissues. Thus, the levels reached at the end of development in hatchlings ranked as follow $Ag \gg Zn > Hg > Mn > Co \gg Cd > ^{134}Cs$, which contrast with the accumulation efficiencies observed on the whole egg (see above). Moreover, some elements such as ²⁴¹Am or Pb do never pass through the eggshell and are never detectable in internal compartments, demonstrating that the permeability of the egg capsule at later developmental stages is element-dependant. Cs uptake kinetics in the whole eggs was closely similar to the pattern of egg weight variation along the development time. As mentioned above, cuttlefish egg weight varies mainly due to seawater inputs/outputs and soluble Cs is expected to follow these water movements, especially being accumulated in PVF and embryo during the egg-swelling phase. This external uptake from surrounding seawater has been also demonstrated for other elements such as Ba (Payne *et al.* 2011), Ca (Dorey *et al.* 2013), and organic molecules (Bidel *et al.* 2015). Recently, dissolved pharmaceutical compounds, *i.e.* fluoxetine have been measured in the embryo in experimental conditions proving its penetration through the eggshell (Bidel *et al.* 2015). This is the only study, to the best of our knowledge that demonstrated bioaccumulation of organic contaminants in the developing embryo, raising the question of eggshell shielding capacities towards legacy organic xenobiotics such as PAHs or PCBs that remain unexplored. Nevertheless, other large molecules such as metabolic drugs (*e.g.* ouabain) do not pass through the chorion (Bonnaud *et al.* 2013), raising questions on the mechanisms of molecular transport through the eggshell. Considering that, this eggshell selectivity cannot be explained by 1) the essential or non-essential character of trace elements, *e.g.* Ag is one of the most efficiently accumulated elements, 2) by the chemical properties of trace elements, as Hg and Zn, which belong to class B and transition metal, respectively,

similarly accumulate in the embryo and 3) by the “size” of the element or molecule, while organic molecules and Cs which have the biggest atomic radius (260 pm) easily passes through the eggshell.

The increasing permeability of the eggshell during embryonic development has been interpreted as being linked to the expansion of the chorionic membrane, resulting in egg swelling, which induces the shrinkage and stretching of the envelopes due to the notable increase in egg volume (De Wachter *et al.* 1988). The comparison of trace element bioaccumulation in eggs from different cephalopod species helped to highlight the importance of eggshell architecture to explain shielding / permeability capacities. In 2006, Villanueva and Bustamante reported that hatchlings of *Octopus vulgaris*, the embryos of which develop surrounded only by the chorion, displayed higher concentrations of Ag and Pb than cuttlefish ones. Following exposure to radiotracers during the entire embryonic development process of eggs from the octopus *O. vulgaris*, the squid *Loligo vulgaris*, the cuttlefish *S. officinalis* and the sepiolid *Rossia macrosoma*, trace element accumulation subsequently measured in the hatchlings revealed that $CF_{\text{octopus}} > CF_{\text{squid}} > CF_{\text{cuttlefish}} > CF_{\text{sepiolid}}$ which was closely in line with the egg structure of the different species considered (Lacoue-Labarthe *et al.* 2011b). Indeed, the size and structure of egg encapsulation is determinant with respect to trace element incorporation with two extreme cases: in octopus, the egg is just surrounded by the chorion which poorly retains metals (especially Ag and Cd) leading to high element concentrations in both the embryo and vitellus. Conversely, the hard shell of sepiolid bound more than 99 % of trace elements leading to the lowest concentrations measured in embryonic tissues despite a longer development time, 20 d vs 80 d in octopus and sepiolid, respectively (and thus longer exposure to waterborne metals). Additionally, it has been shown that different components of the eggshell provide different levels of shielding according to the metals (Lacoue-Labarthe *et al.* 2011b). These contrasting trace element affinities for the different eggshell parts were more obvious in squid eggs. Thus, the chorion may act as a passive barrier (Bonnaud *et al.* 2013) against Cd and Co penetration as it retained 41 and 60 % of the total amount of the accumulated metal, respectively. In contrast, Ag, Mn and Zn were mainly bound to the nidamental- and oviducal- originated layers (Lacoue-Labarthe *et al.* 2011b). These results highlight the fact that the diffusion capacities of the different metals through the egg envelopes seem to differ with respect to the element considered and to the eggshell layers.

In this context, a better understanding of the eggshell shielding properties initially requires the chemical composition of the egg capsule and the PVF to be determined. As commented above, the eggshell components play a key role in the binding capacities of the capsule layers but also seem to drive the egg swelling process. Though the

PVF is known as being slightly hypertonic when compared to seawater (De Leersnyder & Lemaire 1972), oviducal-originated molecules appear necessary to induce the water entry in the perivitelline space (Ikeda *et al.* 1993), as being transferred from the oviducal layers into the PVF passing through the chorion. These eggshell molecules, which metals could be bound on, could be the vectors of transfer and contamination for the embryo during development. Secondly, the cuttlefish eggshell is known to host symbiotic bacteria transferred by the female accessory nidamental glands when the egg is laid (Bloodgood 1977, Barbieri *et al.* 1997). The bacteria populations displayed a non-negligible metabolic activity as illustrated by the high O_2 consumption of isolated eggshell (Cronin & Seymour 2000). It thus remains to be demonstrated if and how these populations could contribute to the bioaccumulation / retention of trace elements (Gadd 1990) during the embryonic development.

Once passed through the eggshell, trace elements should be accumulated in the embryo via tissues in direct contact with the perivitelline fluid. Autoradiography of a newly hatched juvenile cuttlefish exposed to ^{110m}Ag during its last week of embryonic development (Fig. 4) revealed that metal is mainly found in the gills and skin. Additionally, a significant portion of the trace elements also accumulate in the inner yolk sac and could indirectly contribute to embryo contamination during the consumption of vitelline reserve. This phenomenon has been previously shown in *Octopus vulgaris* eggs where Ag distribution in autoradiogram was closely related to the position of the outer and inner yolk sac (Lacoue-Labarthe *et al.* 2011b).

Finally, it is noteworthy that the large eggs of *R. macrosoma* and *S. officinalis* produce large, benthic hatchlings that weigh 30 to 100 times more than the small, planktonic and active swimming hatchlings of *L. vulgaris* and *O. vulgaris* (Villanueva *et al.* 1997, Nixon & Mangold 1998). This raises the non-exclusive hypotheses 1) that metals were incorporated in inverse relation to body size (*i.e.* lower for the large-sized *S. officinalis* and higher for the small-sized *O. vulgaris*), as the surface-volume relationship may influence metal absorption (Hédouin *et al.* 2006) and 2) that the different mode of life of these early stages suggests the possibility of a contrasting metabolism between the embryos that could modulate the uptake rate of trace elements.

The influence of an embryo's physiology on its bioaccumulation capacities

Recent investigations on physiological performances in response to ocean warming and acidification in early-life stages of cephalopods provide new knowledge that contributes to our understanding of the mechanisms driving the bioaccumulation of contaminants in embryos.

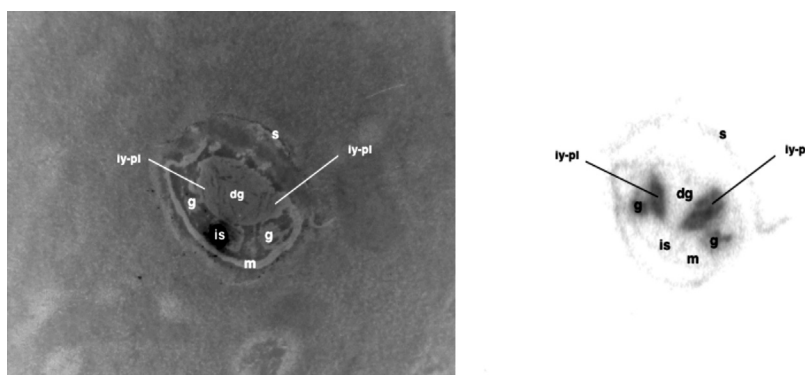


Fig. 4. – Cross body section (left) and autoradiogram (right) of a newly hatched juvenile of *Sepia officinalis* after exposure to dissolved ^{110m}Ag during the last week of embryonic development: dg: digestive gland, g: gills, is: ink sac, ly-pl: posterior lobes of the inner yolk sac (see Boletzky 2002), m: muscle, s: skin. Note that the ^{110m}Ag is mainly found in gills and inner yolk sac suggesting that the embryo accumulates Ag both directly from seawater and from vitelline reserve.

Temperature is the major abiotic factor affecting development by determining its duration (Boletzky 1994) and the conversion effectiveness of vitellus to embryonic tissues (Bouchaud & Galois 1990). Basically, increased temperature leads to higher metabolic rates in the embryos of squid (Rosa *et al.* 2012) or cuttlefish (Pimentel *et al.* 2012) and such an increase of the metabolism is expected to enhance the uptake rate of trace elements in aquatic organisms (White & Rainbow 1984, Sokolova & Lannig 2008). Following the exposure of cuttlefish eggs to dissolved trace elements at 16 and 19 °C during the respective 60 and 40 days of development, hatchlings displayed increased Ag bioaccumulation with increasing temperature presumably related to a higher metabolic rate. In contrast, Cd, Co, and Zn concentrations remained unchanged whatever the egg incubation temperature was, thus implying that a longer exposure time at 16 °C did not lead to a higher metal accumulation and therefore that the elemental content of the embryo may be regulated independently of the metabolic rate according to the developmental stages (Lacoue-Labarthe *et al.* 2009b, 2012).

Due to the egg case serving as a diffusion barrier for respiratory gases (CO_2 , O_2), embryos are naturally exposed to low PVF $p\text{O}_2$ ($p\text{O}_2 < 60,000 \mu\text{atm} \sim 25\%$ air sat. (Cronin & Seymour 2000, Gutowska & Melzner 2009) and to high $p\text{CO}_2$ in turn ($p\text{CO}_2$ 2,000–4,000 μatm , Gutowska & Melzner 2009). Then, when cuttlefish eggs are submitted to increased seawater $p\text{CO}_2$, trace element bioaccumulation efficiencies are modulated with respect to the element. As a consequence of the extremely high $p\text{CO}_2$ and low pH values in the PVF (Dorey *et al.* 2013), Ag accumulation for instance is fostered by ocean acidification (Lacoue-Labarthe *et al.* 2009b, 2011a). This observation has to be linked to the acid-base balance regulation response of organisms to PVF hypercapnia, that mobilizes ionic channels such as Na^+/H^+ exchangers (Hu *et al.* 2011), a privileged active uptake pathway for Na-mimetic Ag (Webb & Wood 2000, Grosell & Wood 2001). Addi-

tionally, it is noteworthy that, in octopus, contrasting to the other cephalopod species, Ag is highly accumulated in the vitellus (Lacoue-Labarthe *et al.* 2011b) that should be correlated to the high $\text{Na}^+/\text{K}^+/\text{ATPase}$ concentrations found around the vitellin syncytium in this species (Bonnaud *et al.* 2013). These results therefore imply that the embryo physiology through the activities of the ionic machinery contributes in part to the Ag uptake.

Similarly, varying Zn concentrations recorded in hatchlings developed at different $p\text{CO}_2$ are expected to result from changes in the metabolic requirements of the embryo, especially with respect to the activity of the carbonic anhydrase, a key enzyme involved in the acid-base regulation which uses Zn as cofactor (Lacoue-Labarthe *et al.* 2009b).

Beyond the fact that ocean acidification impacts the physiology of the embryo and modifies the active transport of metals through the epithelial membrane (Rainbow 1997), the effect of PVF pH conditions on chemical speciation of trace elements also needs to be taken into account. Once elements pass through the eggshell, they are dissolved in a more acidic medium (pH ranged from 7.6 to 7.2 according to seawater pH ranged from 8.10 to 7.6, respectively, see Dorey 2013). This lowering PVF pH therefore increases the fraction of elements under the ionic form considered as the most bioavailable and should favour their subsequent bioaccumulation in embryonic tissues. Notwithstanding, Cd accumulation in embryos is lowered when PVF pH decreased, potentially due to increasing competition with protons for binding sites. This contrasting result underlines that trace element bioaccumulation in encapsulated embryos is complex and is driven by both chemical and physiological mechanisms.

The maternal transfer of contaminants

The first available data dealing with trace elements in cuttlefish eggs focused on the trends of burdens in

the vitellus and the embryo of metabolically essential metals such as Cu or Zn followed all along the development (Decleir *et al.* 1970). These authors showed that Cu concentrations in the vitellus decreased as much as it increases in the embryo, with the total amount of Cu remaining constant all along the development time. This observation suggested that Cu for the embryo originates from an initial pool stored in the vitellus when the egg is produced and laid. In the squid *Loligo forbesi*, Craig and Overnell (2003) showed low variations of Cu and Zn concentrations, suggesting that the accumulation of both these elements is regulated probably through metalloprotein transfers from the female gonad to the egg vitellus (Gerpe *et al.* 2000). In the eggs of *S. officinalis* from the wild, the higher concentrations of Cu, Fe and Zn when compared to Ag, Cd, and Pb, and the concentrations of the former recorded in hatchlings close to those measured in the vitellus, also support the hypothesis of a maternal transfer of these essential elements during the egg maturation process (Miramand *et al.* 2006, Villanueva & Bustamante 2006). The use of radiotracers to follow the fate and behavior of trace elements provided the evidence that ^{75}Se and ^{65}Zn initially assimilated from radiolabelled food by the female were subsequently transferred to the embryos as a consequence of their incorporation in the vitellus (Lacoue-Labarthe *et al.* 2008b).

Interestingly, this maternal transfer is not restricted to metabolically required metals, as in the same conditions, $^{110\text{m}}\text{Ag}$ has been also found equally distributed in the eggshell and vitellus whereas ^{109}Cd was not detectable in newly spawned eggs. This Ag transfer suggests its integration in the egg through both the yolk components and the nidamental glands involved in the eggshell production. This result is consistent with the translocation of this metal from the digestive gland to the genital system reported in adult females (Bustamante *et al.* 2004), suggesting that maternal transfer could be an elimination pathway for a substantial part of the Ag previously accumulated in this detoxification organ. In turn, transferred Ag ends in embryonic tissues and could lead thus to toxic effects on the developing organism.

Similarly, high concentrations of As has been noted in cuttlefish hatchlings from cultured eggs although a low concentration of dissolved As in experimental conditions was measured, implying that maternal transfer was the main source of contamination (Le Pabic *et al.* 2015b). Interestingly, As accumulation was previously reported in cephalopod genital tissues: the oviduct gland of the giant squid *Architeuthis dux* is the tissue containing the highest As concentration in this squid species (Bustamante *et al.* 2008). In cuttlefish eggs from the wild, As also displayed higher concentrations in the embryo than in the eggshell (Miramand *et al.* 2006) and remained mostly stable throughout embryogenesis (Rosa *et al.* 2015), strongly suggesting that this element may be maternally inherited.

THE MATURING JUVENILE: FROM HATCHING TO ONE-MONTH OLD

Exposure and bioaccumulation

From hatching, contamination of the nectobenthic cuttlefish can occur through contact with sediments and seawater and through the ingestion of food. Their respective contributions in the cuttlefish bioaccumulation have been mainly investigated with trace elements. The trophic route has been clearly determined as the main bioaccumulation pathway for juveniles for Cd, Co, inorganic and organic Hg and Zn (Bustamante 1998, Bustamante *et al.* 2002b, 2004, 2006c, Lacoue-Labarthe *et al.* 2009d), whereas seawater appeared to be the main route for Ag and PCB incorporation in cuttlefish (Bustamante *et al.* 2004, Danis *et al.* 2005). For each of these compounds, the transfer from sediments appeared to be quite limited. It should be noted that all these experimentations with radiotracers and radiolabelled molecules were undertaken a few days after hatching when the digestive system, deeply involved in the metabolism of contaminants, was still developing. The bioaccumulation efficiency in juveniles is thus susceptible to change during this physiological maturation phase that occurs several weeks after hatching.

Several field and experimental studies have highlighted an important increase of Cu and Zn concentrations but also of Ag, Cd, and Hg in juvenile cuttlefish during the first post-hatching weeks (Miramand *et al.* 2006, Lacoue-Labarthe *et al.* 2009d, Le Pabic *et al.* 2015b). This drastic change of metal contents suggests that newly hatched cuttlefish display a strong need for essential elements that remains unsupplied during the embryonic phase due to the limiting penetration properties of the eggshell. Thus, the elimination of this barrier at hatching time allows the required supply of essential elements but is also accompanied by the accumulation of non-essential ones. Interestingly, the concentrations of these latter (Ag and Cd) stabilized after one month of juvenile life, correlating with the digestive gland maturation (Le Pabic *et al.* 2015b). This observation implies therefore that the intracellular digestion mode in newly hatched juveniles with non-mature digestive gland fosters metal assimilation. In this context, although all the bioaccumulation and detoxification processes are not well-known in early life stages, it is clear that the physiological maturation of the digestive system occurring during the first weeks after hatching is critical in terms of metal metabolism and strongly drives the ability of juveniles to maintain their ecological performances (*e.g.* growth, survival rate) in contaminated environments.

When exposed to increasing waterborne Zn accumulation during several weeks of exposure, cuttlefish displayed a limited ability to regulate Zn-build up at this period (*i.e.* 2-month post-hatching; Le Pabic *et al.* 2015b). Indeed, for dissolved Zn concentrations up to $50 \mu\text{g.l}^{-1}$,

the internal concentration increases continuously with time whereas it remains stable for lower Zn exposure concentrations, likely resulting from an equilibrium state between water and concentrations reached in animals rather than from a regulatory process. Additionally, this Zn uptake was found associated with a modification of the subcellular fraction of some elements such as Ag, Cd and Cu (Le Pabic *et al.* 2015b).

Finally, metal concentration analysis in juveniles sampled along the Bay of Biscay coastal nurseries revealed a southward increase of Hg concentrations in cuttlefish tissues (Lacoue-Labarthe *et al.*, unpubl data). It is well known that the assimilation efficiencies of metallic contaminants could vary according to the environmental condition (e.g. temperature; (Lacoue-Labarthe *et al.* 2009b) or the food sources Bustamante *et al.* 2002b, 2004, Hédouin *et al.* 2010). Additionally, from the juvenile to adult life, the cuttlefish displays a strong dietary plasticity during ontogenic development contributing to enhanced levels of bioamplified contaminants with its increasing trophic position (Chouvelon *et al.* 2011). Thus, the temperature, the type of available prey and the complexity of the trophic web occurring in the cuttlefish nurseries will directly impact the capacities of juveniles to accumulate contaminants.

Tissue distribution and detoxification capacities

Owing to the small size and to the lack of maturation of some organs (e.g. the digestive gland), the contaminant tissue distribution of juvenile cuttlefish has been poorly investigated. However, radiotracer experiments highlighted that the accumulation of Ag, Cd, Co and Zn occurred mainly in the digestive gland, whereas Hg and PCB were accumulated in the muscle parts, whatever the source of contaminant (Bustamante *et al.* 2002b, 2004, Danis *et al.* 2005, Lacoue-Labarthe *et al.* 2009d). But for the latter, the digestive gland plays a major role in the elimination of the compounds (Danis *et al.* 2005, Lacoue-Labarthe *et al.* 2009d). This distribution is linked to the detoxification processes used by juvenile cuttlefish to avoid the deleterious effects of the accumulated contaminants. The detoxification strategies appear contaminant-specific, depending on the chemical affinity of the contaminants with tissue ligands. Detoxification mechanisms of marine invertebrates mainly involve the precipitation of metals into insoluble concretions and the binding to cytosolic proteins, both being interconnected (Wang & Rainbow 2010). Among the better known cytosolic proteins are the metallothioneins, the reduced glutathione and the high molecular weight proteins, which are all able to bind trace elements with affinity to sulphur ligands (Cosson 1991, Dickinson & Forman 2002, Serafim & Bebianno 2010). In *S. officinalis*, only metallothioneins have been studied but no clear role was highlighted in metal detoxification (Bustamante *et al.* 2006a). However, an important syn-

thesis of metallothioneins has been highlighted in juvenile cuttlefish between hatching and 6-week Zn exposure. During this period, an important proportion of Co, Cu, Fe and Se is solubilized to make these essential elements more available for important physiological functions such as hemocyanin synthesis. Moreover, a positive correlation between metallothioneins, soluble Cu and Zn concentrations have been recently shown in whole juvenile cuttlefish, consistent with the role of these proteins in trace element regulation (Le Pabic *et al.* 2015b). Considering other ligands, the reduced glutathione and high molecular weight proteins, to the best of our knowledge no information is available in the scientific literature for cuttlefish (adult or juvenile). Once bound to a ligand, the contaminant can be directly excreted or stored in a less toxic form, often after precipitation. In whole juveniles, Ag, Cd, Cu, Fe, Mn and Zn were mainly found in the insoluble fraction during the first month post-hatching (Le Pabic *et al.* 2015b). In the case of the non-essential elements Ag and Cd, although stored in the same organ (*i.e.* the digestive gland) mainly under insoluble forms, their detoxification differs. Indeed, the retention time of Cd is longer than the life span of the animal, underlining a very efficient storage of this compound instead of its elimination, whereas Ag is rapidly excreted after storage (Bustamante *et al.* 2002b, 2004). In the same manner, Hg is excreted from the cuttlefish tissues following a translocation to the digestive gland before being eliminated (Lacoue-Labarthe *et al.* 2009d).

TOXICOLOGICAL IMPACT OF CONTAMINANTS ON EARLY-LIFE STAGES

Of the experimental or field studies focusing on contaminant accumulation and detoxification capacities in embryos and/or juveniles, few studies have reported toxic effects on developing cuttlefish, regarding the egg growth, development times, abnormalities or hatching success. To the best of our knowledge, only two studies reported toxicity of organic crude oil and organophosphorus pesticide on *Octopus pallidus* hatchlings and *O. mimus* embryos, respectively (Long & Holdway 2002, Gutiérrez-Pajares *et al.* 2003). Both squid and cuttlefish embryo mortalities occur when eggs are exposed to hundreds μg per litre of Cd (Establier & Pascual 1983, D'Aniello *et al.* 1990, Sen & Sunlu 2007), a concentration far higher than those found in polluted coastal areas. Nevertheless, the inhibition of hatching success increased when exposure occurs at precocious stages (Establier & Pascual 1983). These results suggest that Cd, at this high concentration, could have an unexpected toxic action on the embryos during the first stages of embryogenesis despite the protective capacities of the eggshell against elemental penetration (see above). Additionally, increased embryo mortalities have been reported when cuttlefish embryos were exposed

to 400 $\mu\text{g.l}^{-1}$ of the essential element Cu. Interestingly, Cu induced precocious hatching at lower concentrations (50–200 $\mu\text{g.l}^{-1}$) with juveniles displaying a lower survival rate (Establier & Pascual 1983, Paulij *et al.* 1990). Indeed, the hatching event seems to be triggered by a perivitelline hypoxia or hypercarbia thresholds reached at the end of development caused by embryonic respiration. Environmental hypoxia, ocean acidification or warming conditions fostering metabolic suppression of embryos are known to induce premature hatching (Hu *et al.* 2011, Rosa *et al.* 2012). Similarly, a direct toxic action of accumulated Cu on embryo physiology and metabolism (including the expected cost of energy allocated to detoxification) could therefore precipitate the hatching event. Alternatively, Cu could affect the physical-chemical properties of the eggshell by interacting with capsule components. This phenomenon has been well described in the eggs of the herrings *Clupea harengus* and *C. pallasii* exposed to Cd (Alderdice *et al.* 1979a, 1979b). The Cd could compete with Ca, which is essential for the capsule polymerization process. The metal binding to polysaccharides of the eggshell weakens this latter and limits its stretching capacities during the egg swelling process. Consequently, the eggshell would be more vulnerable to breakdown when the egg swells potentially causing premature hatching of the embryos (Alderdice *et al.* 1979a).

Recently, two studies investigated the sublethal effects of dissolved metals in seawater at environmentally relevant concentrations for embryo physiology (Lacoue-Labarthe *et al.* 2009a, Lacoue-Labarthe *et al.* 2010a). Cuttlefish eggs were exposed to environmentally relevant concentrations of Ag, Cd and Cu (< 1200 ng.l^{-1} , < 610 ng.l^{-1} and < 230 $\mu\text{g.l}^{-1}$, respectively) that did not significantly affect the egg growth, and did not lead to developmental abnormalities or embryo death. Nevertheless, these metals affected the setup of determinant physiological functions in the embryos, such as the digestive and immune systems. When eggs were exposed to 30 ng.l^{-1} of Cd and more, the activities of acid phosphatases, involved in the degradation of yolk reserves (Morrill 1973, Pasteels 1973) were lowered (Lacoue-Labarthe *et al.* 2010a). In contrast, Cu stimulated those activities at a concentration of 2.5 $\mu\text{g.l}^{-1}$. Similarly, the phenoloxidases, some Cu-dependant enzymes involved in the innate defence mechanism in molluscs underwent inhibition when eggs were exposed to 250 $\mu\text{g.l}^{-1}$ (Lacoue-Labarthe *et al.* 2009a). However, no direct cause-effect relationship was found between the effects of metals on the enzyme activities and reduced hatching weight at high metal concentrations, suggesting that trace elements could affect other physiological functions during embryogenesis (Lacoue-Labarthe *et al.* 2010a).

Finally, organic compounds such as selective serotonin re-uptake inhibitors (SSRIs) pass through the eggshell during the last phase of embryonic development and induce significant changes of behavior, memory processing and neurochemical and immunological capacities in

young cuttlefish (Di Poi *et al.* 2013, 2014, Bidel *et al.* 2015). Thus, fluoxetine exposure (at environmentally relevant concentration; 1 ng.l^{-1}) from 15 days pre-hatching to 1-month post-hatching significantly affects behavioural plasticity such as learning and memory capabilities, which is determinant for young cuttlefish to cope autonomously with foraging for instance (Di Poi *et al.* 2013). Similarly, cryptic behavior of newly hatched animals is affected by fluoxetine at this low concentration making the juvenile visible to predators. However, this effect occurs in a transitory manner while the juvenile recovers its camouflage efficiencies when the fluoxetine exposure is pursuing during the first month post-hatching (Di Poi *et al.* 2014).

At higher concentrations, fluoxetine embryonic exposure (1 and 10 $\mu\text{g.l}^{-1}$) 1) modulated dopaminergic but not serotonergic neurotransmission, 2) decreased cell proliferation in key brain structures for cognitive and visual processing, 3) did not induce a conspicuous change in camouflage quality. In the long term, these alterations observed during a critical period of development may impair complex behaviours of the juvenile cuttlefish and thus lead to a decrease in their survival.

Toxicological impacts of contaminants on the juvenile stage have been rarely investigated until recently, resulting in a lack of threshold data considering the sensitivity of cuttlefish, as well as consistent biomarker(s). The complex ontogeny of cuttlefish, especially with regard to a continuous changing physiology (e.g. maturation of the digestive system), makes it difficult to define a simple cause-effect relationship between contaminant exposure and individual performances.

To the best of our knowledge, only a few works reported respectively the impact of the dissolved Zn and the antidepressant fluoxetine on survival and a large range of biomarkers in *S. officinalis* (Di Poi *et al.* 2013, 2014, Le Pabic *et al.* 2015a, 2015b). Works on Zn highlighted that mortality during the first 2 weeks post-hatching occurred at 230 $\mu\text{g Zn l}^{-1}$ and above, which correspond to an intermediate sensitivity towards other aquatic invertebrates (e.g. Chan 1988, Devos *et al.* 2012, Nadella *et al.* 2013). In addition, the mortality threshold, growth, predatory behavior and activities of immune (phenoloxidases) and digestive (acid phosphatases, trypsin and cathepsins) enzymes were also altered at lower Zn concentrations and at different timings of exposure (Le Pabic *et al.* 2015a). The fluoxetine (at 10 $\mu\text{g.l}^{-1}$) had no effect on phenoloxidase activities but significantly inhibited the activity of lysozyme (Bidel *et al.* 2015) that participates in pathogen elimination and in the modulation of the humoral immune responses (Le Pabic *et al.* 2014), confirming the immunodepressive action of SSRIs in cuttlefish. Finally, Zn exposure in juveniles leads to increased oxidative stress and reduced regulation of ROS with lipid peroxidation damages (Fig. 5) recorded after 6 weeks of exposure to 50 $\mu\text{g.l}^{-1}$ (Le Pabic *et al.* 2015b), a concentration registered in coastal environments and estuaries (Liu & Wang 2013, Salvatore *et al.* 2013).

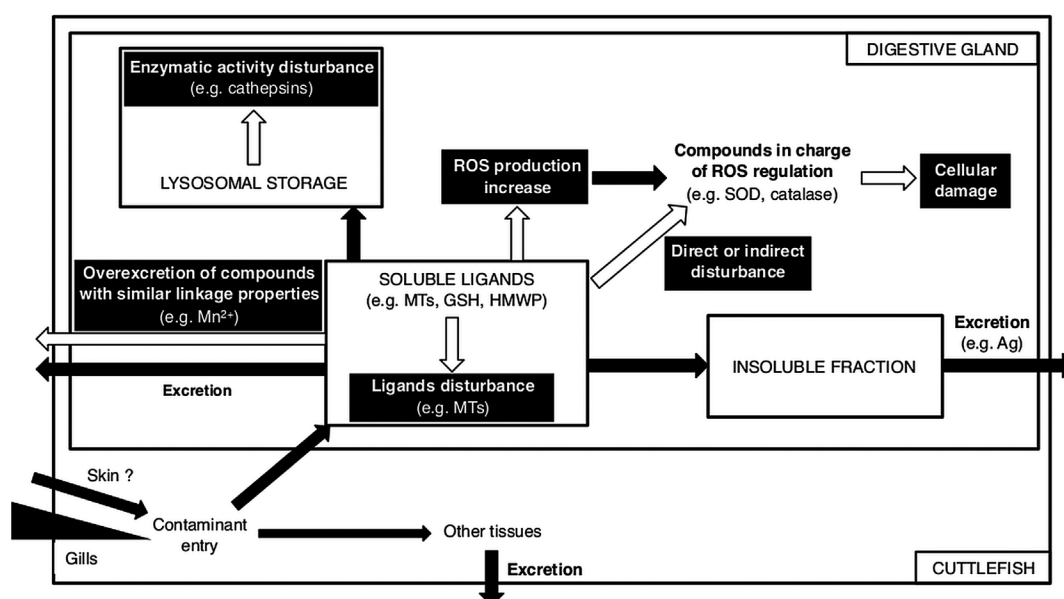


Fig. 5. – Simplified summary of contaminant metabolism (black) and disturbances (red) previously highlighted in *Sepia officinalis* juvenile stage (Bustamante *et al.* 2004, Le Pabic *et al.* 2015a, b). GSH: glutathione; HMWP: high molecular weight protein; MTs: metallothioneins; ROS: reactive oxygen species; SOD: superoxide dismutase.

Thus, the limited knowledge available indicates that the toxicological responses of cuttlefish could differ between embryonic and juvenile phases due to 1) contrasting bioaccumulation efficiencies, 2) detoxification capacities and 3) the continued maturation of the physiological system during the first month of juvenile life. It is therefore necessary to investigate the ontogenic stage-dependant sensitivity of cuttlefish to a wide range of contaminants, by assessing its capacity to bioaccumulate the different contaminants alone or in mixtures, the physiological “machinery” dedicated to their detoxification and the potential direct or indirect toxic effects on this animal.

ACKNOWLEDGMENTS. – The authors are very grateful to C Rouleau for the autoradiograms performed on cuttlefish eggs and juvenile. The authors thank S von Boletzky and L Bonnaud for their invitation to write this review. Anonymous reviewers are thankfully acknowledged for improving the manuscript.

REFERENCES

- Alderdice DF, Rosenthal H, Velsen FPJ 1979a. Influence of salinity and cadmium on capsule strength in Pacific herring eggs. *Helgol Mar Res* 32: 149-162.
- Alderdice DF, Rosenthal H, Velsen FPJ 1979b. Influence of salinity and cadmium on the volume of Pacific herring eggs. *Helgol Mar Res* 32: 163-178.
- Barbieri E, Barry K, Child A, Wainwright N 1997. Antimicrobial activity in the microbial community of the accessory nidamental gland and egg cases of *Loligo pealei* (Cephalopoda: Loliginidae). *Biol Bull* 193: 275-276.
- Bidel F, Poi CD, Imarazene B, Koueta N, Budzinski H, Delft PV, Bellanger C, Jozet-Alves C 2015. Pre-hatching fluoxetine-induced neurochemical, neurodevelopmental, and immunological changes in newly hatched cuttlefish. *Environ Sci Pollut Res* 23: 5030-5045.
- Blanc A, Daguzan J 1998. Artificial surfaces for cuttlefish eggs (*Sepia officinalis* L.) in Morbihan Bay, France. *Fish Res* 38: 225-231.
- Blanc A, Daguzan J 2000. Size selectivity in the diet of the young cuttlefish *Sepia officinalis* (Mollusca: Sepiidae). *J Mar Biol Ass UK* 80: 1137-1138.
- Bloodgood RA 1977. The squid accessory nidamental gland: ultrastructure and association with bacteria. *Tissue Cell* 9: 197-208.
- Boletzky SV 1986. Encapsulation of cephalopod embryos: a search for functional correlations. *Am Malacol Bull* 4: 217-227.
- Boletzky SV 1994. Embryonic development of cephalopods at low temperatures. *Antarct Sci* 6: 139-142.
- Boletzky SV 1998. Cephalopod eggs and egg masses. *Oceanogr Mar Biol* 36: 341-371.
- Boletzky SV 2002. Yolk sac morphology in Cephalopod embryos. *Abhandl Geol Bundes* 57: 57-68.
- Boletzky SV 2003. Biology of early life stages in cephalopod molluscs. *Adv Mar Biol* 44: 143-203.
- Bonnaud L, Franko D, Vouillot L, Bouteau F 2013. A study of the electrical polarization of *Sepia officinalis* yolk envelope, a role for Na⁺/K⁺-ATPases in osmoregulation? *Commun Integr Biol* 6:e26035.
- Boucaud-Camou E, Boismery J 1991 The migrations of the cuttlefish (*Sepia officinalis* L.) in the English Channel. In Boucaud-Camou E ed., The Migrations of the Cuttlefish (*Sepia officinalis* L.) in the English Channel Book. Centre de publication de l'Université de Caen, Caen.

- Boucaud-Camou E, Yim M 1980. Fine structure and function of the digestive cell of *Sepia officinalis* (Mollusca: Cephalopoda). *J Zool* 191: 89-105.
- Boucaud-Camou E, Koueta N, Boismery J, Medhioub A 1991. The sexual cycle of *Sepia officinalis* L. from the Bay of Seine. In Boucaud-Camou E ed., The Sexual Cycle of *Sepia officinalis* L. from the Bay of Seine Book. Centre de publication de l'Université de Caen, Caen.
- Bouchaud O, Galois R 1990. Utilization of egg-yolk lipids during the embryonic development of *Sepia officinalis* in relation to temperature of the water. *Comp Biochem Physiol* 97B: 611-615.
- Bustamante P 1998. Bioaccumulation des éléments traces chez les mollusques céphalopodes et bivalves pectinidés. Implication de leur biodisponibilité pour le transfert vers les prédateurs. PhD Thesis, Université de La Rochelle, La Rochelle.
- Bustamante P, Caurant F, Fowler SW, Miramand P 1998a. Cephalopods as a vector for the transfer of cadmium to top marine predators in the north-east Atlantic Ocean. *Sci Total Environ* 220: 71-80.
- Bustamante P, Cherel Y, Caurant F, Miramand P 1998b. Cadmium, copper and zinc in octopuses from Kerguelen Islands, Southern Indian Ocean. *Polar Biol* 19: 264-271.
- Bustamante P, Cosson RP, Gallien I, Caurant F, Miramand P 2002a. Cadmium detoxification processes in the digestive gland of cephalopods in relation to accumulated cadmium concentrations. *Mar Environ Res* 53: 227-241.
- Bustamante P, Teyssié JL, Fowler SW, Cotret O, Danis B, Miramand P, Warnau M 2002b. Biokinetics of zinc and cadmium accumulation and depuration at different stages in the life cycle of the cuttlefish *Sepia officinalis*. *Mar Ecol Prog Ser* 231: 167-177.
- Bustamante P, Teyssié J-L, Danis B, Fowler SW, Miramand P, Cotret O, Warnau M 2004. Uptake, transfer and distribution of silver and cobalt in tissues of the common cuttlefish *Sepia officinalis* at different stages of its life cycle. *Mar Ecol Prog Ser* 269: 185-195.
- Bustamante P, Bertrand M, Boucaud-Camou E, Miramand P 2006a. Subcellular distribution of Ag, Cd, Co, Cu, Fe, Mn, Pb, and Zn in the digestive gland of the common cuttlefish *Sepia officinalis*. *J Shellfish Res* 25: 987-993.
- Bustamante P, Lahaye V, Durnez C, Churlaud C, Caurant F 2006b. Total and organic Hg concentrations in cephalopods from the North Eastern Atlantic waters: Influence of geographical origin and feeding ecology. *Sci Total Environ* 368: 585-596.
- Bustamante P, Teyssié JL, Fowler SW, Warnau M 2006c. Assessment of the exposure pathway in the uptake and distribution of americium and cesium in cuttlefish (*Sepia officinalis*) at different stages of its life cycle. *J Exp Mar Biol Ecol* 331: 198-207.
- Bustamante P, Teyssié JL, Fowler SW, Warnau M 2006d. Contrasting bioaccumulation and transport behaviour of two artificial radionuclides (^{241}Am and ^{134}Cs) in cuttlefish eggshell. *Vie Milieu* 56: 153-156.
- Bustamante P, González AF, Rocha F, Miramand P, Guerra A 2008. Metal and metalloid concentrations in the giant squid *Architeuthis dux* from Iberian waters. *Mar Environ Res* 66: 278-287.
- Castillo LV, Maita Y 1991. Isolation and partial characterisation of cadmium binding proteins from the oceanic squid *Ommastrephes bartrami*. *Bull Fac Fish Hokkaido Univ* 42: 26-34.
- Chan HM 1988. Accumulation and tolerance to cadmium, copper, lead and zinc by the green mussel *Perna viridis*. *Mar Ecol Prog Ser* 48: 295-303.
- Chouvelon T, Spitz J, Cherel Y, Caurant F, Sirmel R, Mèndez Fernandez P, Bustamante P 2011. Species and ontogenic-related differences in $\delta^{13}\text{C}$ and $\delta^{15}\text{N}$ values and Hg and Cd concentrations of cephalopods. *Mar Ecol Prog Ser* 433: 107-120.
- Craig S, Overnell J 2003. Metals in squid, *Loligo forbesi*, adults, eggs, and hatchlings. No evidence for a role for Cu- or Zn-metallothionein. *Comp Biochem Physiol* 34C: 311-317.
- Cronin ER, Seymour RS 2000. Respiration of the eggs of the giant cuttlefish *Sepia apama*. *Mar Biol* 136: 863-870.
- D'Aniello A, Pischetola M, Vanacore F, De Nicola M, Denuce M 1990. Effect of mercury, cadmium and copper on the development and viability of *Loligo vulgaris* and *Sepia officinalis* embryos. *Ital J Biochem* 32: 130A-132A.
- Danis B, Bustamante P, Cotret O, Teyssié JL, Fowler SW, Warnau M 2005. Bioaccumulation of PCBs in the cuttlefish *Sepia officinalis* from seawater, sediment and food pathways. *Environ Pollut* 134: 113-122.
- De Leersnyder M, Lemaire J 1972. Sur la composition minérale du liquide périembryonnaire de l'oeuf de *Sepia officinalis* L. *Cah Biol Mar* 13: 429-431.
- De Wachter B, Wolf G, Richard A, Declair W 1988. Regulation of respiration during the juvenile development of *Sepia officinalis* (Mollusca: Cephalopoda). *Mar Biol* 97: 365-371.
- Declair W, Lemaire J, Richard A 1970. Determination of copper in embryos and very young specimens of *Sepia officinalis* L. *Mar Biol* 5: 256-258.
- Devos A, Voiseux C, Caplat C, Fievet B 2012. Effect of chronic exposure to zinc in young spats of the Pacific oyster (*Crassostrea gigas*). *Environ Toxicol Chem* 31: 2841-2847.
- Di Poi C, Darmaillacq A-S, Dickel L, Boulouard M, Bellanger C 2013. Effects of perinatal exposure to waterborne fluoxetine on memory processing in the cuttlefish *Sepia officinalis*. *Aquat Toxicol* 132-133: 84-91.
- Di Poi C, Bidet F, Dickel L, Bellanger C 2014. Cryptic and biochemical responses of young cuttlefish *Sepia officinalis* exposed to environmentally relevant concentrations of fluoxetine. *Aquat Toxicol* 151: 36-45.
- Dorey N, Melzner F, Martin S, Oberhänsli F, Teyssié JL, Bustamante P, Gattuso JP, Lacoue-Labarthe T 2013. Ocean acidification and temperature rise: effects on calcification during early development of the cuttlefish *Sepia officinalis*. *Mar Biol* 160: 2007-2022.
- Dorneles PR, Lailson-Brito J, dos Santos RA, Silva da Costa PA, Malm O, Azevedo AF, Machado Torres JP 2007. Cephalopods and cetaceans as indicators of offshore bioavailability of cadmium off Central South Brazil Bight. *Environ Pollut* 148: 352-359.
- Establier R, Pascual E 1983. Efecto del cadmio y el cobre sobre el desarrollo de los huevos de *Sepia officinalis* Linneo. *Invest Pesq* 47: 143-150.
- Finger JM, Smith JD 1987. Molecular association of Cu, Zn, Cd and ^{210}Po in the digestive gland of the squid *Nototodarus gouldi*. *Mar Biol* 95: 87-91.
- Gadd GM 1990. Heavy metal accumulation by bacteria and other microorganisms. *Experientia* 46: 834-840.
- Gauvrit E, Le Goff R, Daguzan J 1997. Reproductive cycle of the cuttlefish, *Sepia officinalis* (L.) in the northern part of the Bay of Biscay. *J Molluscan Stud* 63: 19-28.
- Gerpe MS, de Moreno JEA, Moreno VJ, Patat ML 2000. Cadmium, zinc and copper accumulation in the squid *Illex argentinus* from the Southwest Atlantic Ocean. *Mar Biol* 136: 1039-1044.

- Gomi F, Yamamoto M, Nakazawa T 1986. Swelling of egg during development of the cuttlefish, *Sepiella japonica*. *Zool Sci* 3: 641-645.
- Grimaldi AM, Belcari P, Pagano E, Cacialli F, Locatello L 2013. Immune responses of *Octopus vulgaris* (Mollusca: Cephalopoda) exposed to titanium dioxide nanoparticles. *J Exp Mar Biol Ecol* 447: 123-127.
- Grosell M, Wood CM 2001. Branchial versus intestinal silver toxicity and uptake in the marine teleost *Parophrys vetulus*. *J Comp Physiol* 171B: 585-594.
- Guerra A 2006. Ecology of *Sepia officinalis*. *Vie Milieu* 56: 97-107.
- Gutiérrez-Pajares JL, Olivares A, Bustos-Obregón E 2003. *Octopus mimus* (Mollusca: Cephalopoda) embryo misdevelopment due to chronic exposure to the organophosphorus pesticide parathion. *Int J Morphol* 21: 251-255.
- Gutowska MA, Melzner F 2009. Abiotic conditions in cephalopod (*Sepia officinalis*) eggs: embryonic development at low pH and high $p\text{CO}_2$. *Mar Biol* 156: 515-519.
- Hédouin L, Metian M, Lacoue-Labarthe T, Fichez R, Teyssié J-L, Bustamante P, Warnau M 2010. Influence of food on the assimilation of selected metals in tropical bivalves from the New Caledonia lagoon: Qualitative and quantitative aspects. *Mar Pollut Bull* 61: 568-575.
- Hédouin L, Metian M, Teyssié JL, Fowler SW, Fichez R, Warnau M 2006. Allometric relationships in the bioconcentration of heavy metals by the edible tropical clam *Gafrarium tumidum*. *Sci Total Environ* 366: 154-163.
- Hu MY, Tseng YC, Stumpp M, Gutowska MA, Kiko R, Lucassen M, Melzner F 2011. Elevated seawater PCO_2 differentially affects branchial acid-base transporters over the course of development in the cephalopod *Sepia officinalis*. *Am J Physiol Regul Integr Comp Physiol* 300: R1100-R1114.
- Ikeda Y, Sakurai Y, Shimazaki K 1993. Fertilizing capacity of squid (*Todarodes pacificus*) spermatozoa collected from various storage sites, with special reference to the role of gelatinous substance from the oviductal gland in fertilization and embryonic development. *Invertebr Reprod Dev* 23: 39-44.
- Jecklin L 1934. Beitrag zur Kenntnis der Laichgallertern und der Biologie der Embryonen decapoder Cephalopoden. *Rev Suisse Zool* 41: 593-673.
- Kawano M, Matsushita S, Inoue T, Tanaka H, Tatsukawa R 1986. Biological accumulation of chlordane compounds in marine organisms from the northern North Pacific and Bering Sea. *Mar Pollut Bull* 17: 512-516.
- Kimura S, Higuchi Y, Aminaka M, Bower JR, Sakurai Y 2004. Chemical properties of egg-mucin complexes of the omastrephid squid *Todarodes pacificus*. *J Molluscan Stud* 70: 117-121.
- Kojadinovic J, Jackson CH, Cherel Y, Jackson GD, Bustamante P 2011. Multi-elemental concentrations in the tissues of the oceanic squid *Todarodes filippovae* from Tasmania and the southern Indian Ocean. *Ecotoxicol Environ Saf* 74: 1238-1249.
- Lacoue-Labarthe T, Oberhänsli FR, Teyssié JL, Warnau M, Koueta N, Bustamante P 2008a. Differential bioaccumulation behaviour of Ag and Cd during the early development of the cuttlefish *Sepia officinalis*. *Aquat Toxicol* 86: 437-446.
- Lacoue-Labarthe T, Warnau M, Oberhänsli F, Teyssié JL, Jeffree RA, Bustamante P 2008b. First experiments on the maternal transfer of metals in the cuttlefish *Sepia officinalis*. *Mar Pollut Bull* 57: 826-831.
- Lacoue-Labarthe T, Bustamante P, Hörlin E, Luna-Acosta A, Bado-Nilles A, Thomas-Guyon H 2009a. Phenoloxidase activation in the embryo of the common cuttlefish *Sepia officinalis* and responses to the Ag and Cu exposure. *Fish Shellfish Immunol* 27: 516-521.
- Lacoue-Labarthe T, Martin S, Oberhänsli F, Teyssié JL, Markich SJ, Jeffree R, Bustamante P 2009b. Effects of increased $p\text{CO}_2$ and temperature on trace element (Ag, Cd and Zn) bioaccumulation in the eggs of the common cuttlefish, *Sepia officinalis*. *Biogeosciences* 6: 2561-2573.
- Lacoue-Labarthe T, Metian M, Warnau M, Oberhänsli F, Rouleau C, Bustamante P 2009c. Biokinetics of Hg and Pb accumulation in the encapsulated egg of the common cuttlefish *Sepia officinalis*: radiotracer experiments. *Sci Total Environ* 407: 6188-6195.
- Lacoue-Labarthe T, Warnau M, Oberhänsli F, Teyssié JL, Bustamante P 2009d. Bioaccumulation of inorganic Hg by the juvenile cuttlefish *Sepia officinalis* exposed to ^{203}Hg radiolabelled seawater and food. *Aquat Biol* 6: 91-98.
- Lacoue-Labarthe T, Bustamante P, Le Bihan E, Borg D, Koueta N 2010a. Acid phosphatase and cathepsin activity in the cuttlefish (*Sepia officinalis*) eggs: the effects of Ag, Cd, and Cu exposure. *ICES J Mar Sci* 67: 1517-1523.
- Lacoue-Labarthe T, Warnau M, Oberhänsli F, Teyssié JL, Bustamante P 2010b. Contrasting accumulation biokinetics and distribution of ^{241}Am , Co, Cs, Mn and Zn during the whole development time of the eggs of the common cuttlefish, *Sepia officinalis*. *J Exp Mar Biol Ecol* 382: 131-138.
- Lacoue-Labarthe T, Réveillac E, Oberhänsli F, Teyssié JL, Jeffree R, Gattuso JP 2011a. Effects of ocean acidification on trace element accumulation in the early-life stages of squid *Loligo vulgaris*. *Aquat Toxicol* 105: 166-176.
- Lacoue-Labarthe T, Villanueva R, Rouleau C, Oberhänsli F, Teyssié JL, Jeffree R, Bustamante P 2011b. Radioisotopes demonstrate the contrasting bioaccumulation capacities of heavy metals in embryonic stages of cephalopod species. *PLoS ONE* 6: e27653.
- Lacoue-Labarthe T, Martin S, Oberhänsli F, Teyssié JL, Jeffree R, Gattuso JP, Bustamante P 2012. Temperature and $p\text{CO}_2$ effect on the bioaccumulation of radionuclides and trace elements in the eggs of the common cuttlefish *Sepia officinalis*. *J Exp Mar Biol Ecol* 413: 45-49.
- Le Bihan E, Perrin A, Koueta N 2004. Development of a bioassay from isolated digestive gland cells of the cuttlefish *Sepia officinalis* L. (Mollusca Cephalopoda): effect of Cu, Zn, and Ag on enzymes activities and cell viability. *J Exp Mar Biol Ecol* 309: 47-66.
- Le Goff R, Gauvrit E, Pinczon Du Sel G, Daguzan J 1998. Age group determination by analysis of the cuttlebone of the cuttlefish *Sepia officinalis* L. In reproduction in the bay of Biscay. *J Molluscan Stud* 64: 183-193.
- Le Pabic C, Safi G, Serpentine A, Lebel JM, Robin JP, Koueta N 2014. Prophenoloxidase system, lysozyme and protease inhibitor distribution in the common cuttlefish *Sepia officinalis*. *Comp Biochem Physiol* 172-173: 96-104.
- Le Pabic C, Caplat C, Lehodey JP, Dallas L, Koueta N 2015a. Physiological perturbations in juvenile cuttlefish *Sepia officinalis* induced by subchronic exposure to dissolved zinc. *Mar Pollut Bull* 95: 678-687.
- Le Pabic C, Caplat C, Lehodey JP, Milinkovitch T, Koueta N, Cosson RP, Bustamante P 2015b. Trace metal concentrations in post-hatching cuttlefish *Sepia officinalis* and consequences of dissolved zinc exposure. *Aquat Toxicol* 159: 23-35.

- Lemaire J 1970. Table de développement embryonnaire de *Sepia officinalis* L. (Mollusque Céphalopode). *Bull Soc Zool Fr* 95: 773-782.
- Liu F, Wang WX 2013. Facilitated bioaccumulation of cadmium and copper in the oyster *Crassostrea hongkongensis* solely exposed to zinc. *Environ Sci Technol* 47: 1670-1677.
- Long SM, Holdway DA 2002. Acute toxicity of crude and dispersed oil to *Octopus pallidus* (Hoyle, 1885) hatchlings. *Water Res* 36: 2769-2776.
- Mangold-Wirz K 1963. Biologie des Céphalopodes benthiques et nectoniques de la mer Catalane. *Vie Milieu* 13: 1-285.
- Martin JH, Flegel AR 1975. High copper concentrations in squid livers in association with elevated levels of silver, cadmium, and zinc. *Mar Biol* 30: 51-55.
- Martoja M, Marcaillou C 1993. Localisation cytologique du cuivre et de quelques autres métaux dans la glande digestive de la Seiche, *Sepia officinalis* L. (Mollusque Céphalopode). *Can J Fish Aquat Sci* 50: 542-550.
- Miramand P, Bentley D 1992. Concentration and distribution of heavy metals in tissues of two cephalopods, *Eledone cirrhosa* and *Sepia officinalis* from the French coast of the English Channel. *Mar Biol* 114: 407-414.
- Miramand P, Guary JC 1980. High concentrations of some heavy metals in tissues of Mediterranean octopus. *Bull Environ Contam Toxicol* 24: 783-788.
- Miramand P, Guary JC 1981. Association of Americium-241 with adenochromes in the branchial hearts of the cephalopod *Octopus vulgaris*. *Mar Ecol Prog Ser* 4: 127-129.
- Miramand P, Bustamante P, Bentley D, Koueta N 2006. Variation of heavy metal concentrations (Ag, Cd, Co, Cu, Fe, Pb, V, and Zn) during the life cycle of the common cuttlefish *Sepia officinalis*. *Sci Total Environ* 361: 132-143.
- Morais S, Gomes F, Ramalhosa MJ, Delerue-Matos C, Oliveira MBPP 2013 Occurrence of Polycyclic Aromatic Hydrocarbons in Cephalopods. In Bandeira GC, Meneses HE eds, Occurrence of Polycyclic Aromatic Hydrocarbons in Cephalopods Book. Nova Science Publishers.
- Morrill JB 1973. Biochemical and electrophoretic analysis of acid and alkaline phosphatase activity in the developing embryo of *Physa fontinalis* (Gastropoda, Pulmonata). *Acta Embryol Exp* 1: 61-82.
- Nadella SR, Tellis M, Diamond R, Smith S, Bianchini A, Wood CM 2013. Toxicity of lead and zinc to developing mussel and sea urchin embryos: Critical tissue residues and effects of dissolved organic matter and salinity. *Comp Biochem Physiol* 158C: 72-83.
- Nakahara M, Koyanagi T, Ueda T, Shimizu C 1979. Peculiar accumulation of cobalt-60 by the branchial hearts of Octopus. *Bull Jpn Soc Fish Oceanogr* 45: 539.
- Nixon M, Mangold K 1998. The early stage of *Sepia officinalis*, and the contrast with that of *Octopus vulgaris* (Cephalopoda). *J Zool* 245: 407-421.
- Passow U 2002. Transparent exopolymer particles (TEP) in aquatic environments. *Prog Oceanogr* 55: 287-333.
- Pasteels JJ 1973. Acid phosphatase and thiolacetic esterase activities studied with the electron microscope in the gill epithelium and eggs of Lamellibranchial molluscs. *Bull Ass Anat* 57: 603-606.
- Paulij WP, Zurburg W, Denuce JM, Van Hannen EJ 1990. The effect of copper on the embryonic development and hatching of *Sepia officinalis* L. *Arch Environ Contam Toxicol* 19: 797-801.
- Payne NL, Semmens JM, Gillanders BM 2011. Elemental uptake via immersion: a mass-marking technique for the early life-history stages of cephalopods. *Mar Ecol Prog Ser* 436: 169-176.
- Pierce GJ, Stowasser G, Hastie LC, Bustamante P 2008. Geographic, seasonal and ontogenetic variation in cadmium and mercury concentrations in squid (Cephalopoda: Teuthoidea) from UK waters. *Ecotoxicol Environ Saf* 70: 422-432.
- Raimundo J, Costa PM, Vale C, Costa MH, Moura I 2010. DNA damage and metal accumulation in four tissues of feral *Octopus vulgaris* from two coastal areas in Portugal. *Ecotoxicol Environ Saf* 73: 1543-1547.
- Rainbow PS 1997. Trace metal accumulation in marine invertebrates: Marine biology or marine chemistry? *J Mar Biol Ass UK* 77: 195-210.
- Richard A 1971 Contribution à l'étude expérimentale de la croissance et de la maturation sexuelle de *Sepia officinalis* L. (Mollusque Céphalopode). Thesis, Université de Lille, Lille.
- Richardson BJ, Lam PKS, Martin M 2005. Emerging chemicals of concern: Pharmaceuticals and personal care products (PPCPs) in Asia, with particular reference to Southern China. *Mar Pollut Bull* 50: 913-920.
- Rjeibi M, Metian M, Hajji T, Guyot T, Chaouacha-Chékir RB, Bustamante P 2014. Interspecific and geographical variations of trace metal concentrations in cephalopods from Tunisian waters. *Environ Monit Assess* 186: 3767-3783.
- Rosa R, Pimentel MS, Boavida-Portugal J, Teixeira T, Trübenbach K, Diniz M 2012. Ocean warming enhances malformations, premature hatching, metabolic suppression and oxidative stress in the early life stages of a keystone squid. *PLoS ONE* 7:e38282
- Rosa IC, Raimundo J, Lopes VM, Brandão Cu, Couto A, Santos C, Cabecinhas AS, Cereja R, Calado R, Caetano M, Rosa R 2015. Cuttlefish capsule: An effective shield against contaminants in the wild. *Chemosphere* 135: 7-13.
- Royer J, Pierce GJ, Foucher E, Robin JP 2006. The English Channel stock of *Sepia officinalis*: Modelling variability in abundance and impact of the fishery. *Fish Res* 78: 96-106.
- Salvatore PD, Calcagno JA, Ortíz N, Ríos de Molina MdC, Sabatini SE 2013. Effect of seasonality on oxidative stress responses and metal accumulation in soft tissues of *Aulacomya atra*, a mussel from the South Atlantic Patagonian coast. *Mar Environ Res* 92: 244-252.
- Seixas S, Bustamante P, Pierce G 2005. Accumulation of mercury in the tissues of the common octopus *Octopus vulgaris* (L.) in two localities on the Portuguese coast. *Sci Total Environ* 340: 113-122.
- Semedo M, Oliveira M, Gomes F, Reis-Henriques MA, Delerue-Matos C, Morais S, Ferreira M 2014. Seasonal patterns of polycyclic aromatic hydrocarbons in digestive gland and arm of octopus (*Octopus vulgaris*) from the Northwest Atlantic. *Sci Total Environ* 481: 488-497.
- Sen H, Sunlu U 2007. Effects of Cadmium (CdCl₂) on development and hatching of eggs in European squid (*Loligo vulgaris* Lamarck, 1798) (Cephalopoda: Loliginidae). *Environ Monit Assess* 133: 371-378.
- Smith JD, Plues L, Heyraud M, Cherry RD 1984. Concentrations of the elements Ag, Al, Ca, Cd, Cu, Fe, Mg, Mn, Pb and Zn, and the radionuclides ²¹⁰Pb and ²¹⁰Po in the digestive gland of the squid *Nototodarus gouldi*. *Mar Environ Res* 13: 55-68.
- Sokolova IM, Lannig G 2008. Interactive effects of metal pollution and temperature on metabolism in aquatic ectotherms: implications of global climate change. *Clim Res* 37: 181-201.

- Son MH, Kim J, Shin ES, Seo SH, Chang YS 2015. Diastereoisomer- and species-specific distribution of hexabromocyclododecane (HBCD) in fish and marine invertebrates. *J Hazard Mater* 300: 114-120.
- Storelli MM, Barone G, D'Addabbo R, Marcotrigiano GO 2006. Concentrations and composition of organochlorine contaminants in different species of cephalopod molluscs from the Italian waters (Adriatic Sea). *Chemosphere* 64: 129-134.
- Suzuki Y, Nakahara M, Nakamura R 1978. Accumulation of Cesium-137 by Useful Mollusca. *Bull Jpn Soc Sci Fish* 44: 325-329.
- Tanabe S, Tanaka H, Tatsukawa R 1984. Polychlorobiphenyls, Σ DDT, and Hexachlorocyclohexane Isomers in the Western North Pacific Ecosystem. *Arch Environ Contam Toxicol* 13: 731-738.
- Tanaka T, Hayashi Y, Ishizawa M 1983. Subcellular distribution and binding of heavy metals in the untreated liver of the squid; comparison with data from the livers of cadmium and silver exposed rats. *Experientia* 39: 746-748.
- Temara A, Warnau M, Jangoux M, Dubois P 1997. Factors influencing the concentrations of heavy metals in the asteroid *Asterias rubens* L. (Echinodermata). *Sci Total Environ* 203: 51-63.
- Ueda T, Nakahara M, Ishii T 1979. Amount of trace elements in marine cephalopods. *J Radiat Res* 20: 338-342.
- Ueno D, Inoue S, Ikeda K, Tanaka H, Yamada H, Tanabe S 2003. Specific accumulation of polychlorinated biphenyls and organochlorine pesticides in Japanese common squid as a bioindicator. *Environ Pollut* 125: 227-235.
- Villanueva R, Bustamante P 2006. Composition in essential and non-essential elements of early stages of cephalopods and dietary effects on the elemental profiles of *Octopus vulgaris* paralarvae. *Aquaculture* 261: 225-240.
- Villanueva R, Nozais C, Boletzky SV 1997. Swimming behaviour and food searching in planktonic *Octopus vulgaris* Cuvier from hatching to settlement. *J Exp Mar Biol Ecol* 208: 169-184.
- Wang WX, Rainbow PS 2010. Significance of metallothioneins in metal accumulation kinetics in marine animals. *Comp Biochem Physiol* 152C: 1-8.
- Webb NA, Wood CM 2000. Bioaccumulation and distribution of silver in four marine teleosts and two marine elasmobranchs: influence of exposure duration, concentration, and salinity. *Aquat Toxicol* 49: 111-129.
- Wedemeyer G 1968. Uptake and distribution of Zn^{65} in the coho salmon egg (*Oncorhynchus kisutch*). *Comp Biochem Physiol* 26: 271-279.
- White SL, Rainbow PS 1984. Regulation of zinc concentration by *Palaemon elegans* (Crustacea: Decapoda): zinc flux and effects of temperature, zinc concentration and moulting. *Mar Ecol Prog Ser* 16: 135-147.
- Williams C 1996. Combatting marine pollution from land-based activities: Australian initiatives. *Ocean Coastal Manage* 33: 87-112.
- Wolf G, Verheyen E, Vlaeminck A, Lemaire J, Declair W 1985. Respiration of *Sepia officinalis* during the embryonic and early juvenile life. *Mar Biol* 90: 35-39.
- Won JH, Hong SH, Shim WJ, Yim UH, Kim GB 2009. Persistent organochlorine pollutants in Korean offshore waters: Squid (*Todarodes pacificus*) as a biomonitor. *Mar Pollut Bull* 58: 1238-1244.
- Won JH, Hong SH, Shim WJ, Yim UH, Kim GB 2010. Understanding the accumulation features of POPs in squid from the offshore waters of southeast Korea. *Fish Sci* 76: 325-331.
- Yamada H, Takayanagi K, Tateishi M, Tagatac H, Ikeda K 1997. Organotin compounds and polychlorinated biphenyls of livers in squid collected from coastal waters and open oceans. *Environ Pollut* 96: 217-226.
- Zatylny C, Marvin L, Gagnon J, Henry J 2002. Fertilization in *Sepia officinalis*: the first mollusk sperm-attracting peptide. *Biochem Biophys Res Commun* 296: 1186-1193.

Received on September 16, 2015

Accepted on October 25, 2015

Associate editor: S Boletzky